

ART 216 Asian Art

Final Exam: 35-45



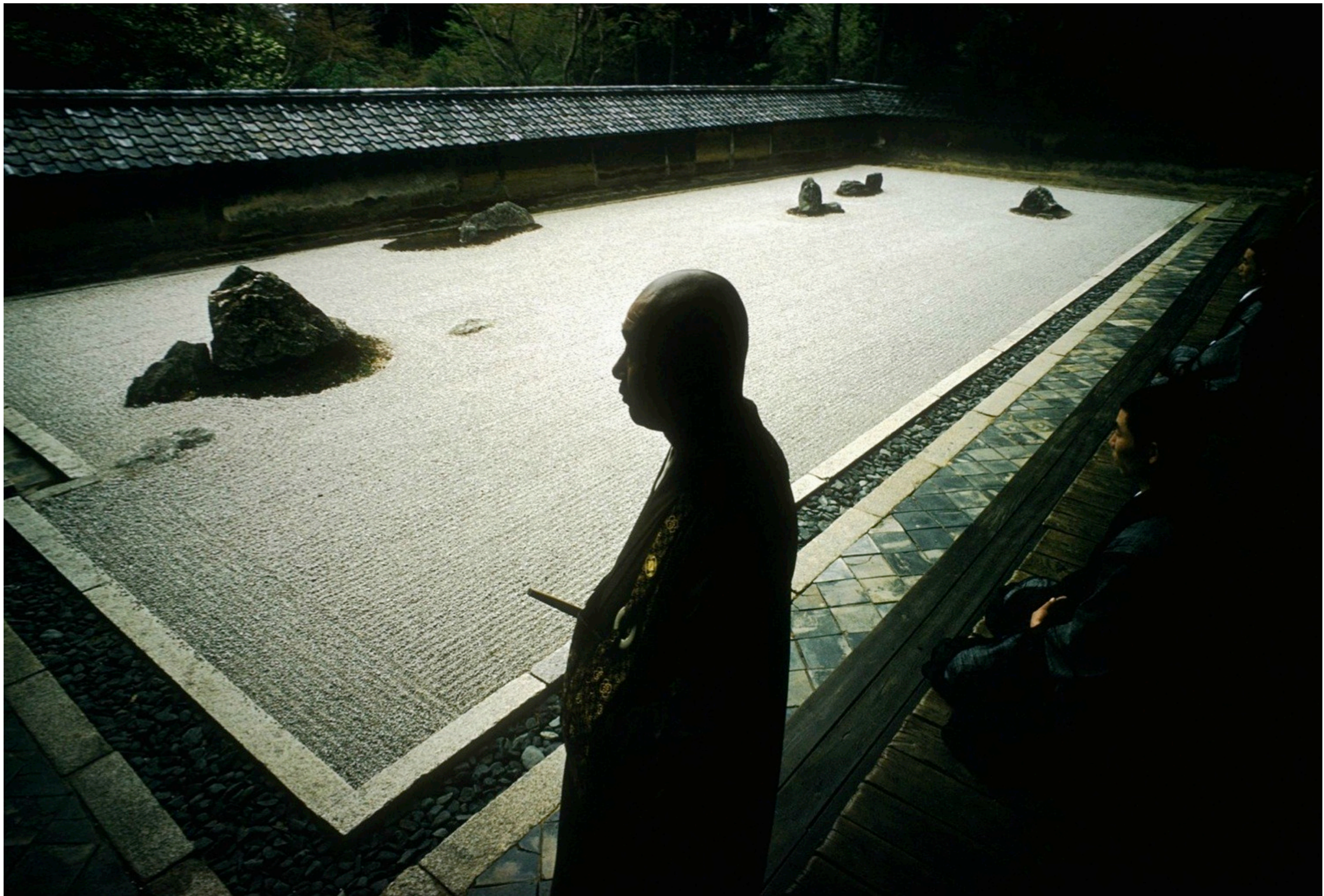




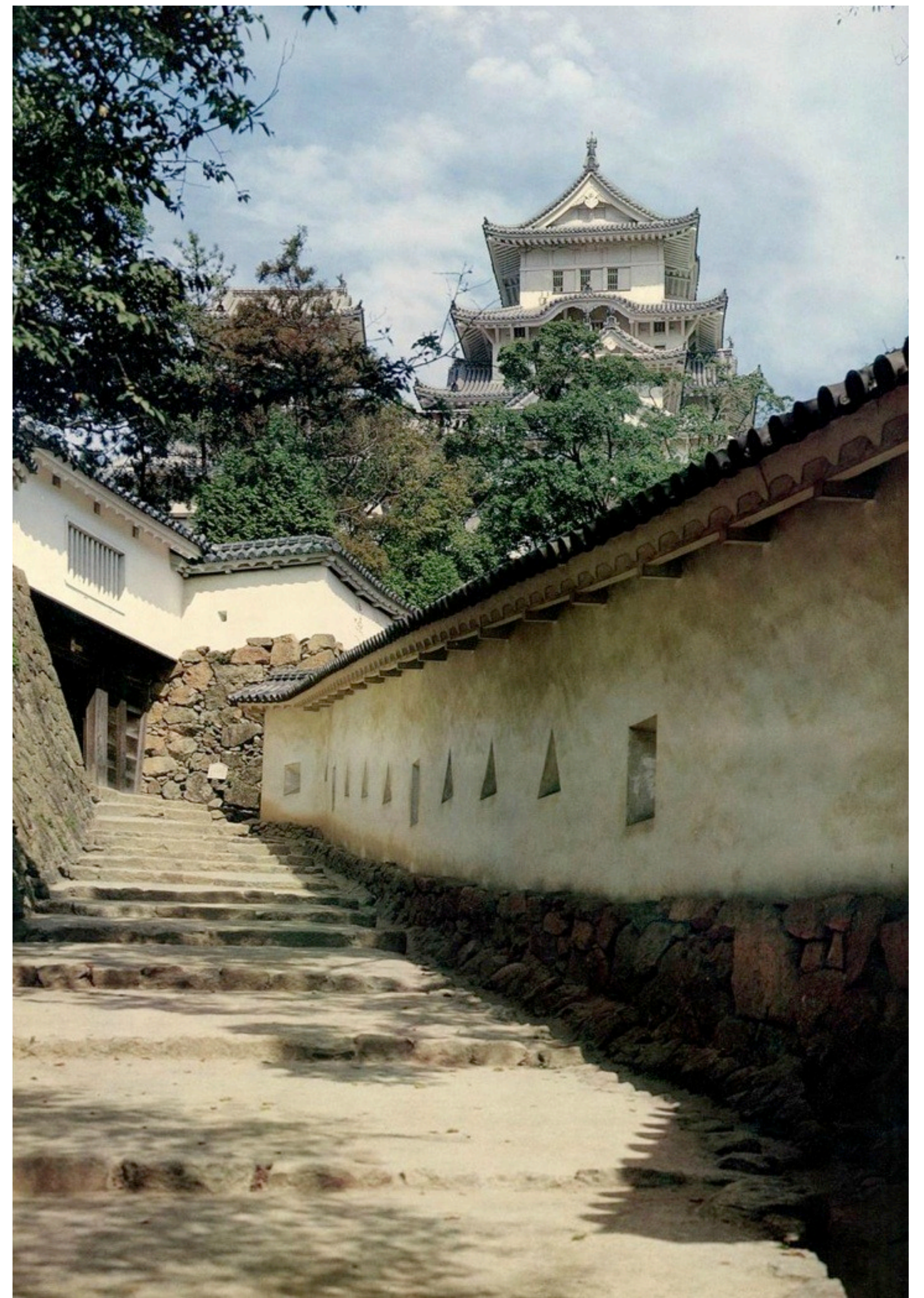










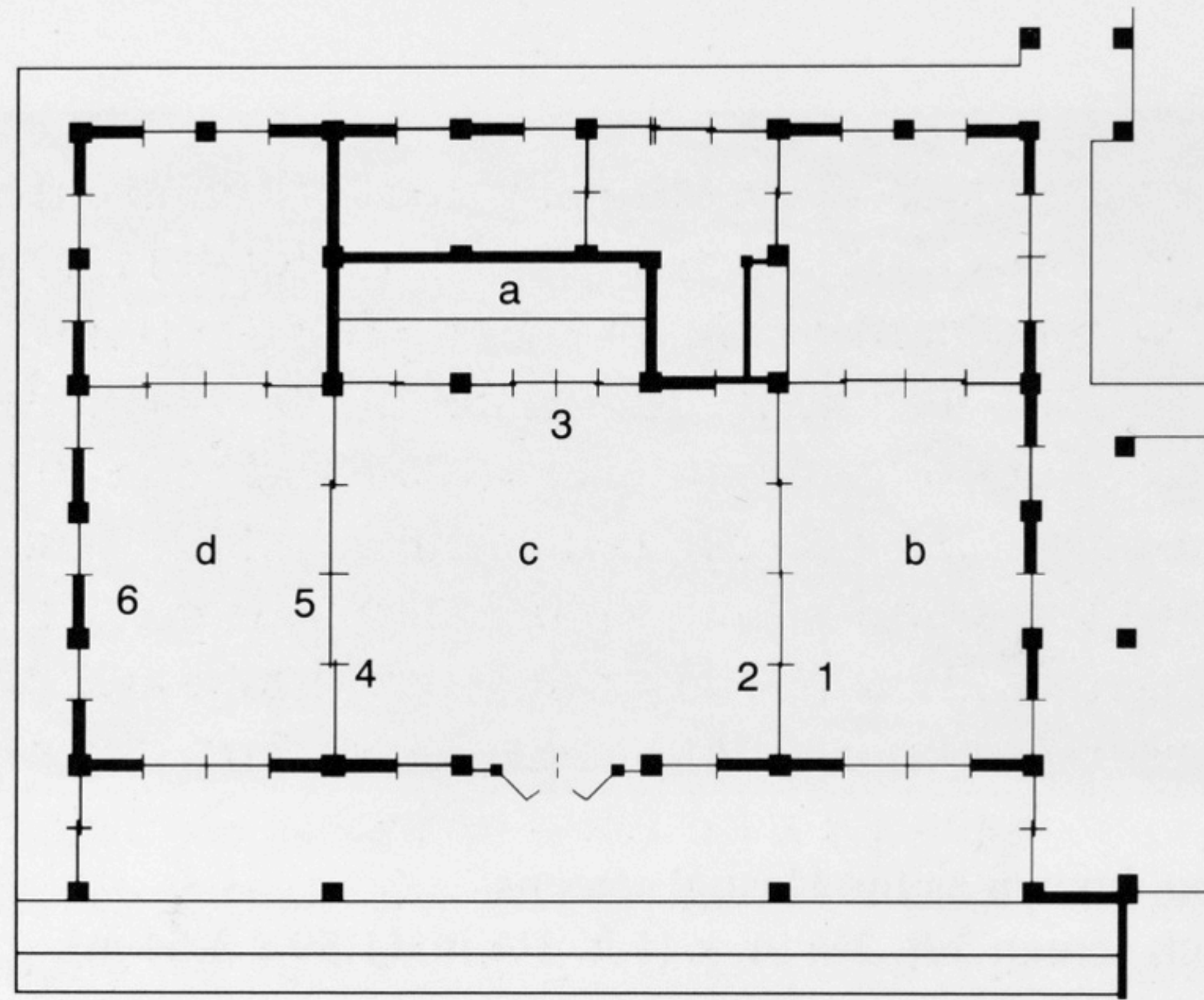










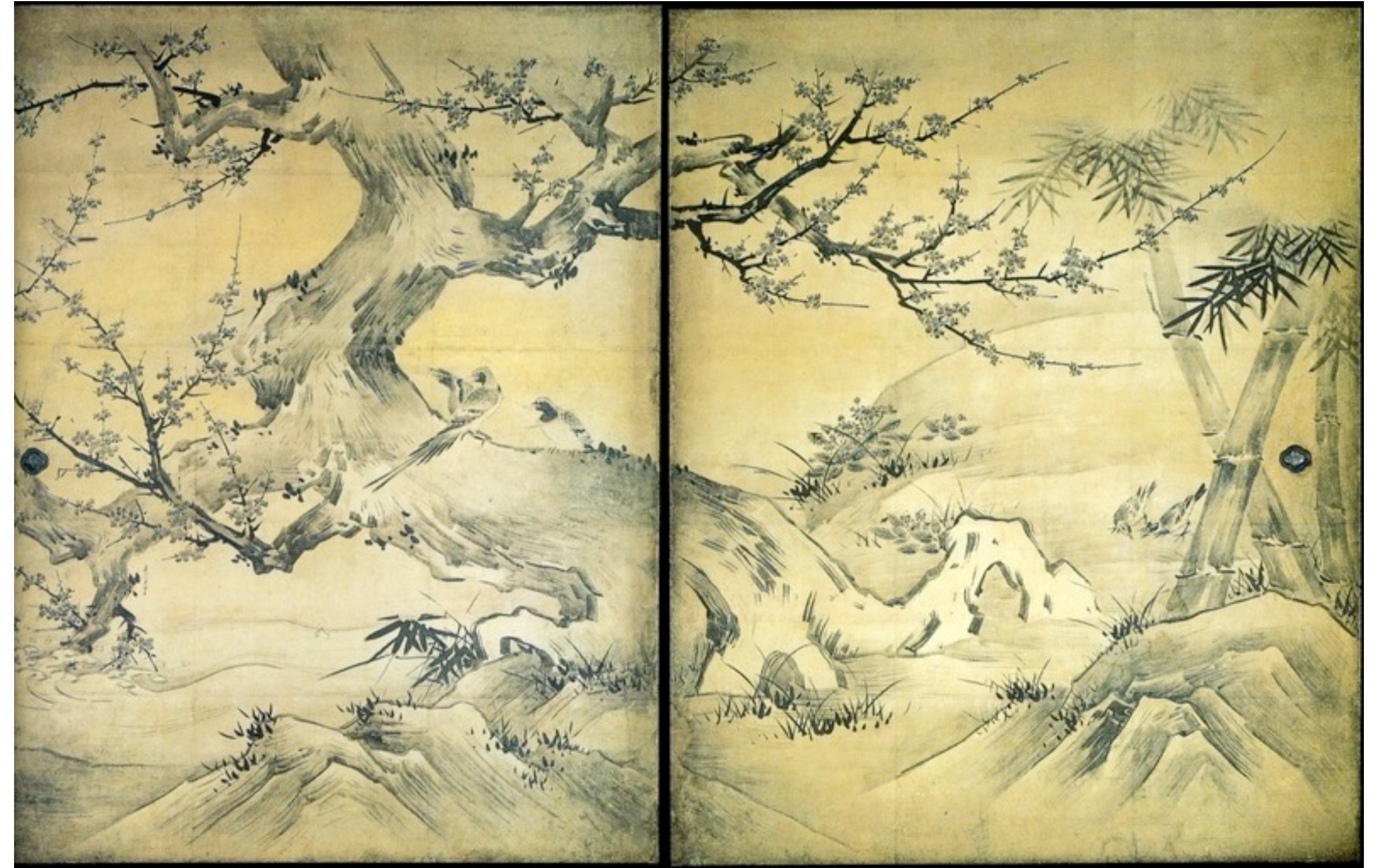


- | | | |
|--|--|--|
| a BUDDHA ROOM | c MIDDLE ROOM | d MASTER'S ROOM |
| b WORSHIP ROOM | 2 Plum tree and water birds | The Four Gentlemanly Accomplishments |
| 1 Eight views of the Xiao and Xiang Rivers | 3 Pine tree and crane | 5 Playing the <i>koto</i> and Japanese chess |
| | 4 Pine tree, cranes, reeds, and wild geese | 6 Executing painting and calligraphy |

240. Plan of Jukōin, Daitokuji, Kyoto, showing locations and subjects of paintings







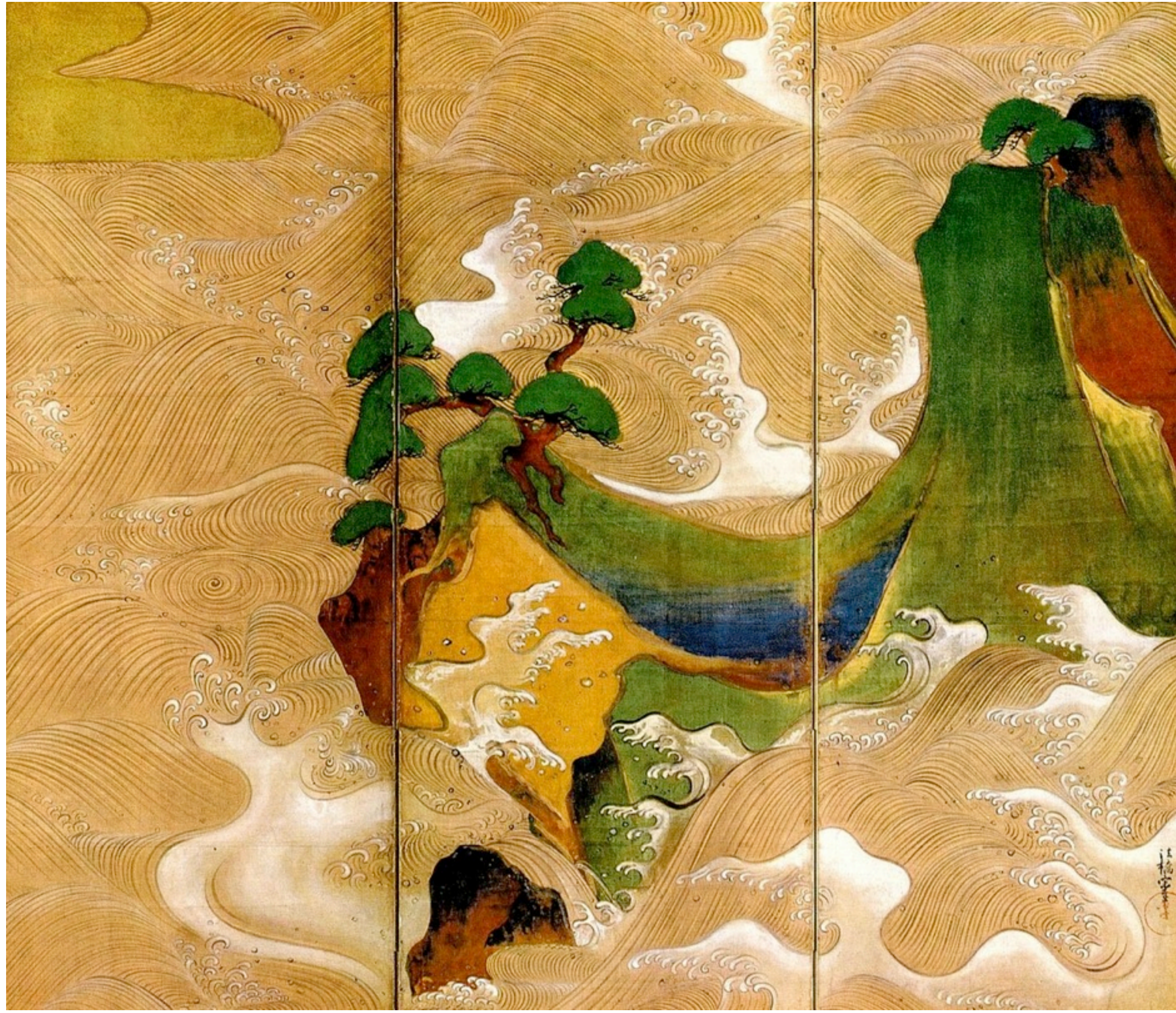










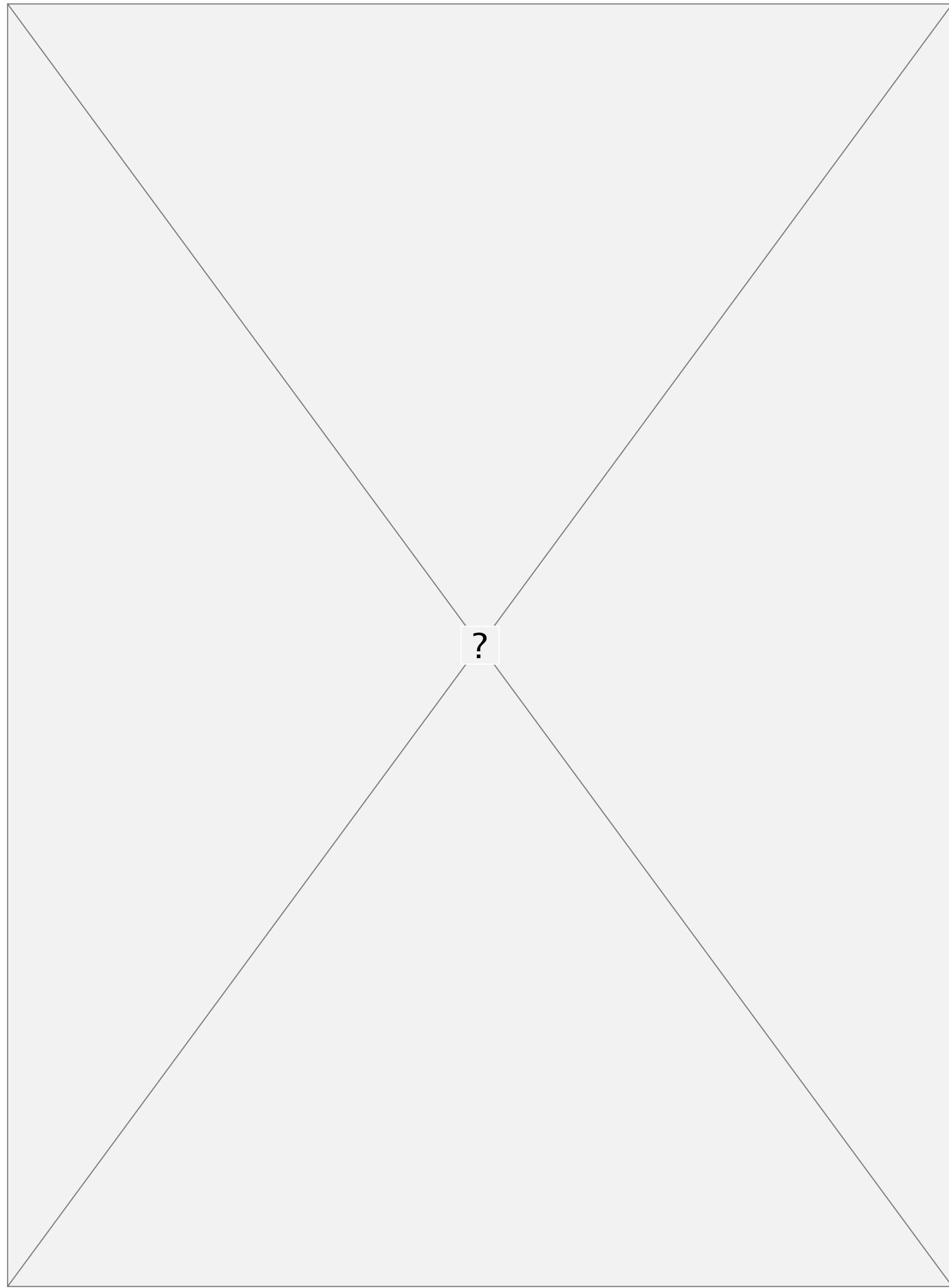






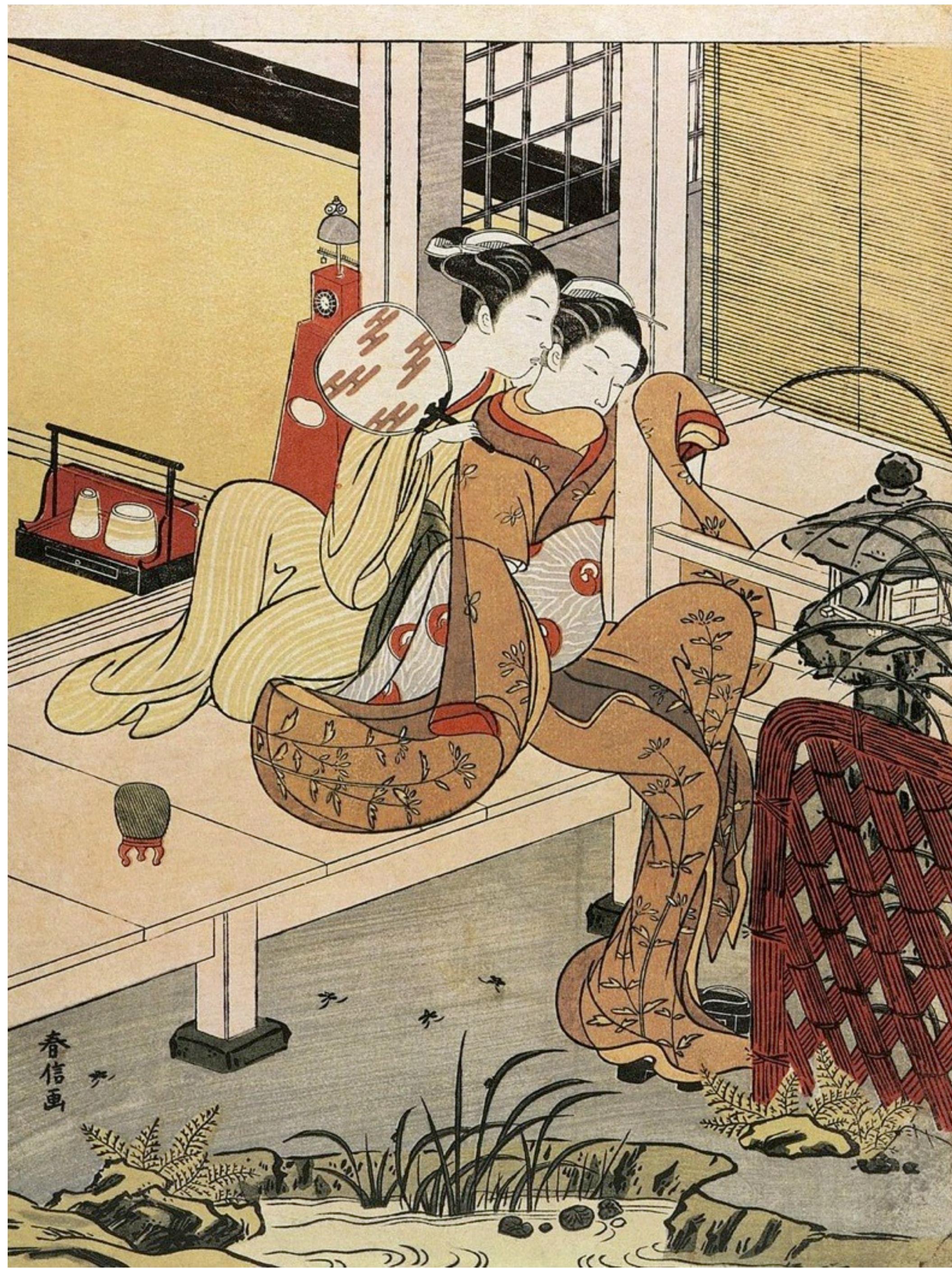
















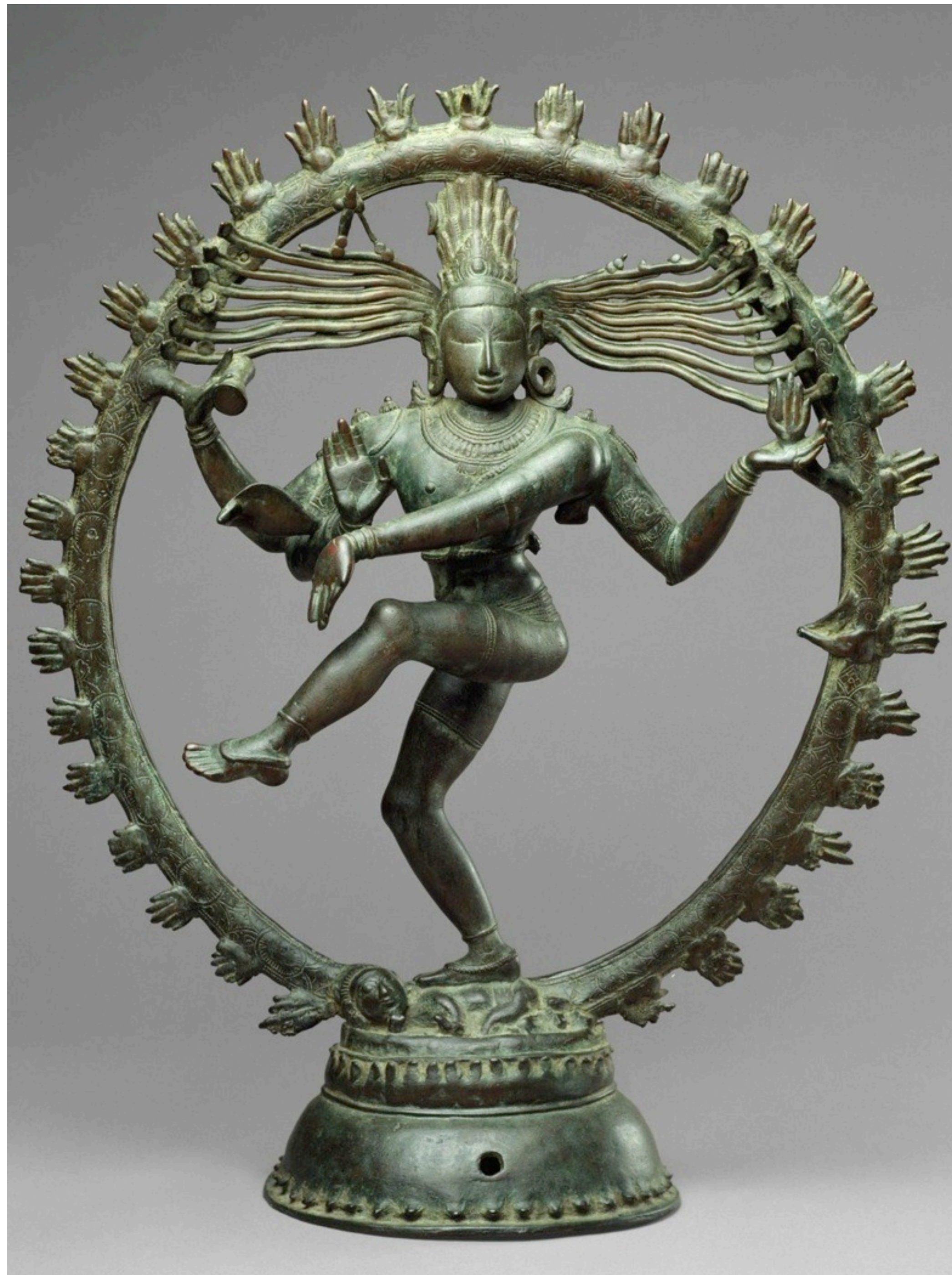
富士山上景 甲州 石手澤

茶臼舟高一色

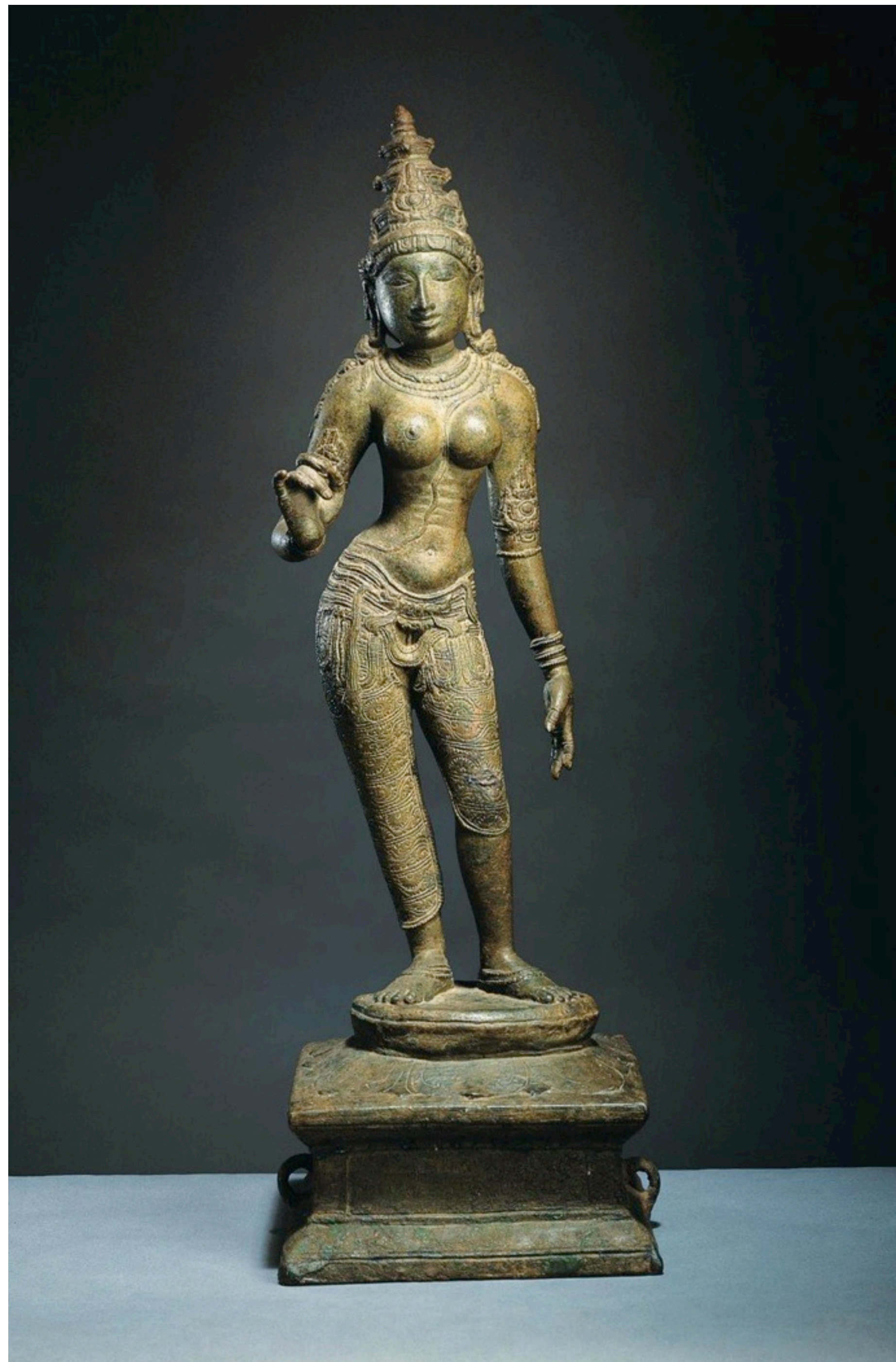


富嶽三十六景 高田川
冥屋八里













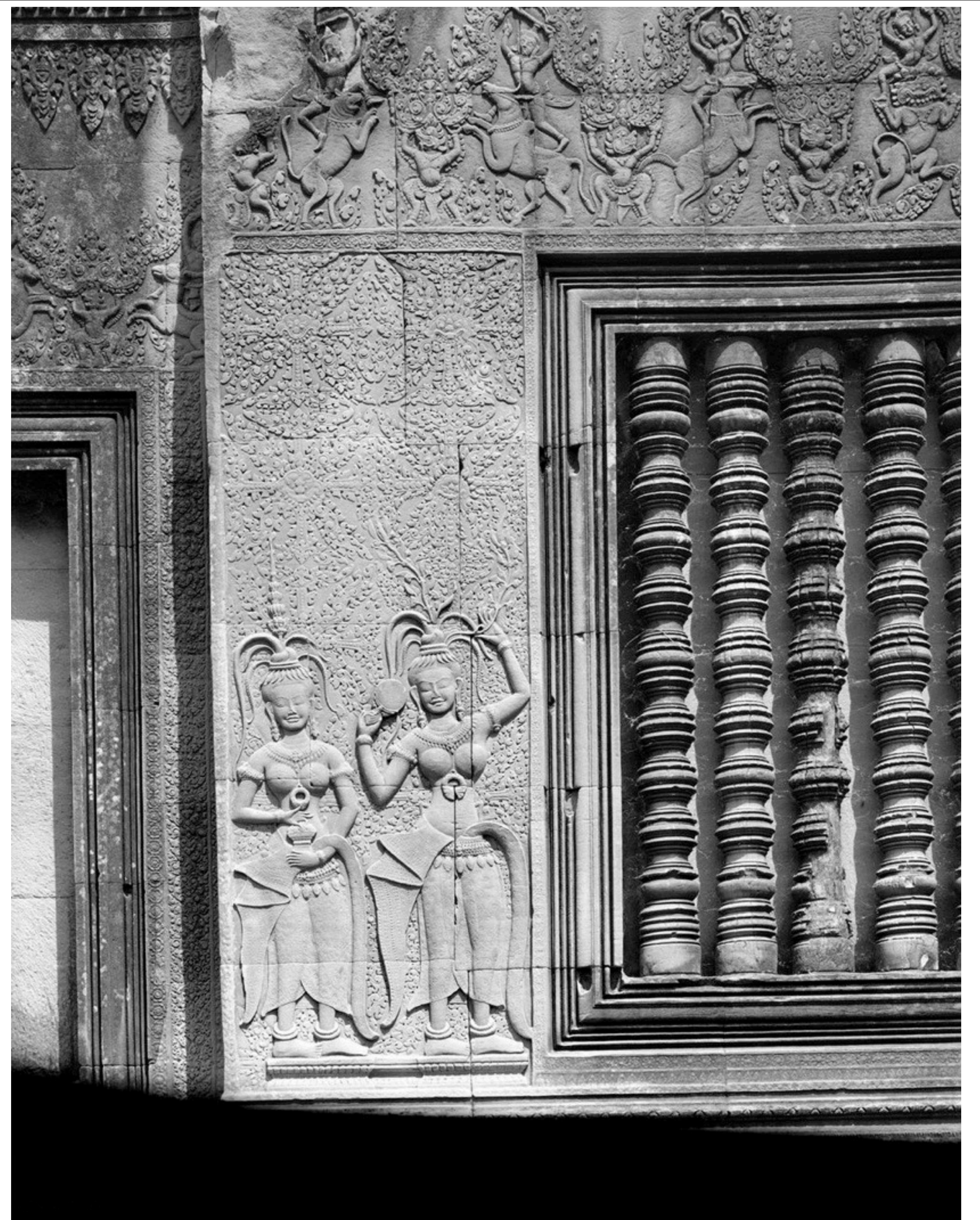
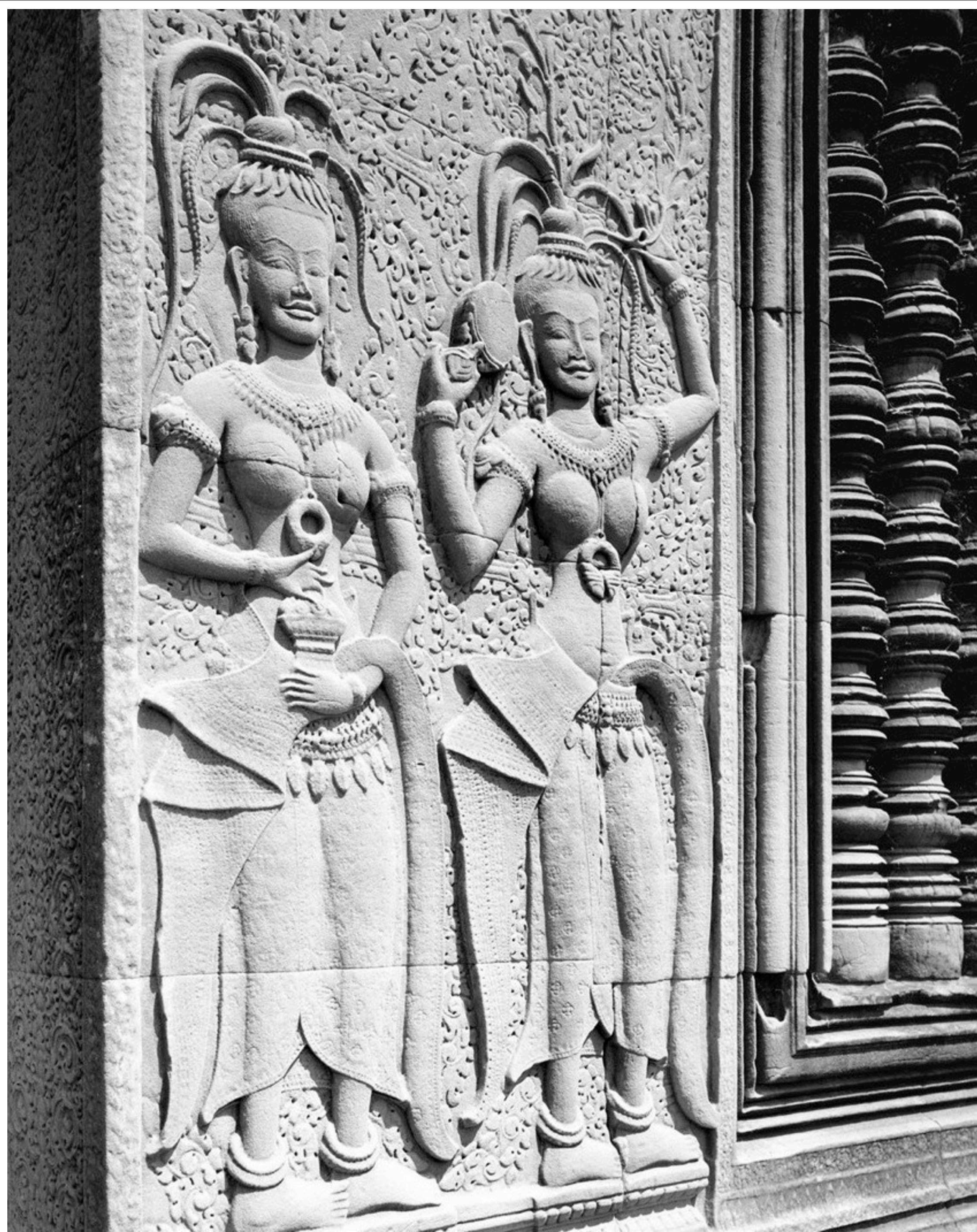




















43a

